

**MADE IN GERMANY**

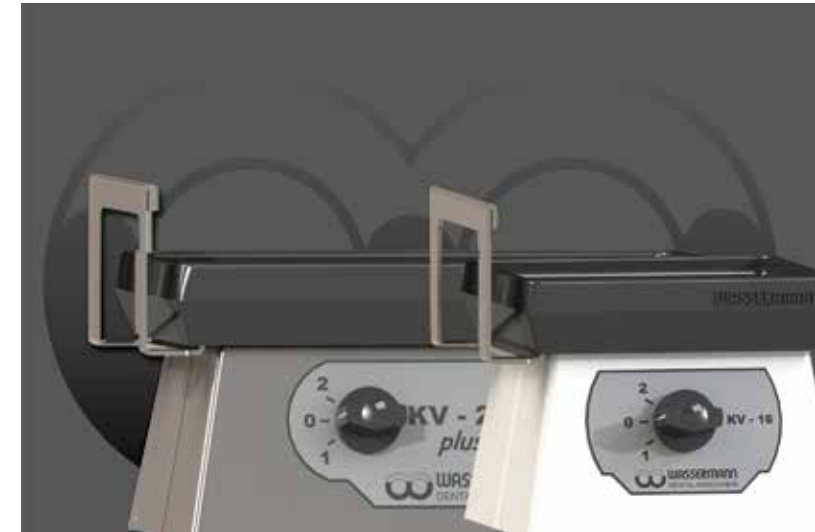
Wassermann is a medium-sized, owner-operated company with head office in Hamburg. We design and produce high-quality technical devices in Germany. Our main users are dental laboratories, dental clinics and various industrial areas worldwide.

**Why a Wassermann product?**

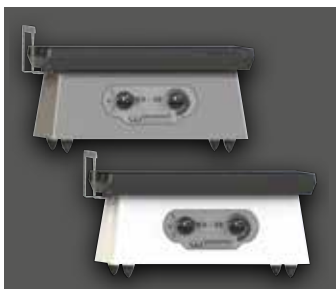
Wassermann products are manufactured from high-quality materials and the proportion of plastics used is intentionally kept as low as possible. Our devices are known for their suitability for daily use, functionality and longevity. As a result, the users place high levels of trust in the Wassermann brand. We feel it is our duty to support our customers on a daily basis when it comes to safety, service and productivity. Technological perfection, optimum quality and especially sustainability are the benchmarks we set. Thanks to the combination of these values, the family-owned company, since its establishment in 1927, has gained worldwide recognition as a manufacturer of high-quality products.



**KV-56, KV-36, KV-26 plus, KV-26 and KV-16**



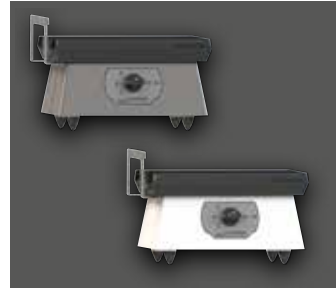
**Power Vibrators**



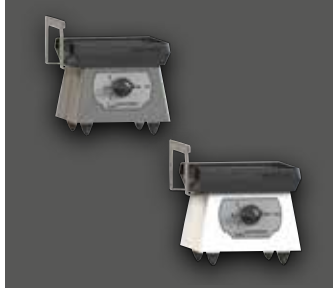
KV-36, white and matt



KV-26 plus, white and matt



KV-26, white and matt



KV-16, white and matt



Further information are available on our website at [www.wassermann.hamburg](http://www.wassermann.hamburg)

Your Dental Dealer \_\_\_\_\_



KV-56, durable cast housing, plastic powder coated



Wassermann Dental-Maschinen GmbH  
 Rudorffweg 15-17 · 21031 Hamburg · Germany  
 Phone: +49 (0)40 730 926-0 · Fax: +49 (0)40 730 37 24  
[info@wassermann-dental.com](mailto:info@wassermann-dental.com) · [www.wassermann.hamburg](http://www.wassermann.hamburg)

# Power Vibrators KV-56, KV-36, KV-26 plus, KV-26 & KV-16

Solid, strong and sturdy. Powerful vibrators from Wassermann can meet any challenge. Even vibration over the entire table as well as powerful vibration intensity is guaranteed. All machines are designed for continuous operation and can be switched from 3000 to 6000 oscillations – KV-56, KV-36 and KV-26 plus with infinitely adjustable vibration intensity.

Stainless steel yoke, perfect for removing casts



KV-16, KV-26, KV-26 plus and KV-36 are made entirely of high quality stainless steel. The extremely robust housing is available in the versions “plastic powder coated” and “matt”.

## Major Features

- Durable and designed for continuous operation
- System for dampening vibrations minimises relay of vibrations to the work environment

Accessories	Item no.
Spare rubber plate KV-56	169510
Spare rubber plate KV-36	169010
Spare rubber plate KV-26 plus, KV-26	169101
Spare rubber plate KV-16	169201
KV-56 white	Item no. 169997
KV-36 white	Item no. 169999
KV-26 plus white	Item no. 169992
KV-26 white	Item no. 169996
KV-16 white	Item no. 169998
KV-36 matt	Item no. 169989
KV-26 plus matt	Item no. 169988
KV-26 matt	Item no. 169987
KV-16 matt	Item no. 169986
Voltage	220–240 V / 50/60 Hz
Power consumption KV-56	1.3 A
Power consumption KV-36	0.6 A
Power consumption KV-26 plus, KV-26, KV-16	0.3 A
Output KV-56	282 W
Output KV-36	130 W
Output KV-26 plus, KV-26, KV-16	70 W
W x H x D KV-56	445 x 187 x 286 mm
W x H x D KV-36	308 x 173 x 208 mm
W x H x D KV-26 plus, KV-26	228 x 150 x 143 mm
W x H x D KV-16	145 x 150 x 143 mm
Weight KV-56	18.6 kg
Weight KV-36	10.9 kg
Weight KV-26 plus, KV-26	5.2 kg
Weight KV-16	3.9 kg
Table dimensions KV-56	430 x 286 mm
Table dimensions KV-36	293 x 200 mm
Table dimensions KV-26 plus, KV-26	210 x 130 mm
Table dimensions KV-16	130 x 130 mm
Vibrating intensity	3000 / 6000 vibr./min
Vibrating intensity KV-56, KV-36, KV-26 plus	infinitely variable
Sound level KV-56	≤ 70 dB(A)
Sound level KV-36, KV-26 plus, KV-26, KV-16	≤ 59 dB(A)
Safety class	IP 54