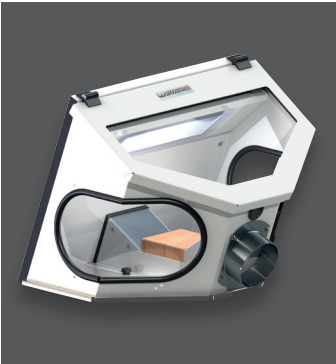
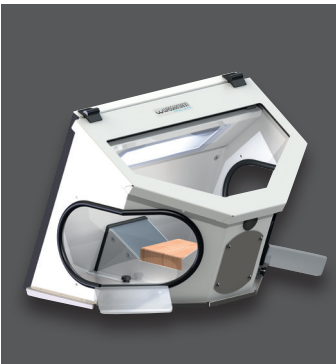


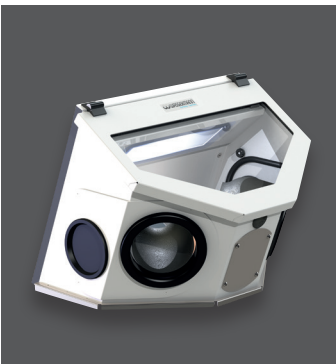
Suction Box Compact III,
basic equipment
with large openings,
spacious internal volume and
optional mounting possibilities
for the extractor nozzle
in the front
or in the rear



Suction Box Compact III,
basic equipment,
the extractor nozzle
is optionally mounted
in the front



Suction Box Compact III
with accessories:
Set of arm rests
for working
without tiring



Suction Box Compact III
with accessories:
Set of safety covers
with sleeves
and separate cuts
for the handpiece

MADE IN GERMANY

Wassermann is a medium-sized, owner-operated company with head office in Hamburg. We design and produce high-quality technical devices in Germany. Our main users are dental laboratories, dental clinics and various industrial areas worldwide.

Why a Wassermann product?

Wassermann products are manufactured from high-quality materials and the proportion of plastics used is intentionally kept as low as possible. Our devices are known for their suitability for daily use, functionality and longevity. As a result, the users place high levels of trust in the Wassermann brand. We feel it is our duty to support our customers on a daily basis when it comes to safety, service and productivity. Technological perfection, optimum quality and especially sustainability are the benchmarks we set. Thanks to the combination of these values, the family-owned company, since its establishment in 1927, has gained worldwide recognition as a manufacturer of high-quality products.



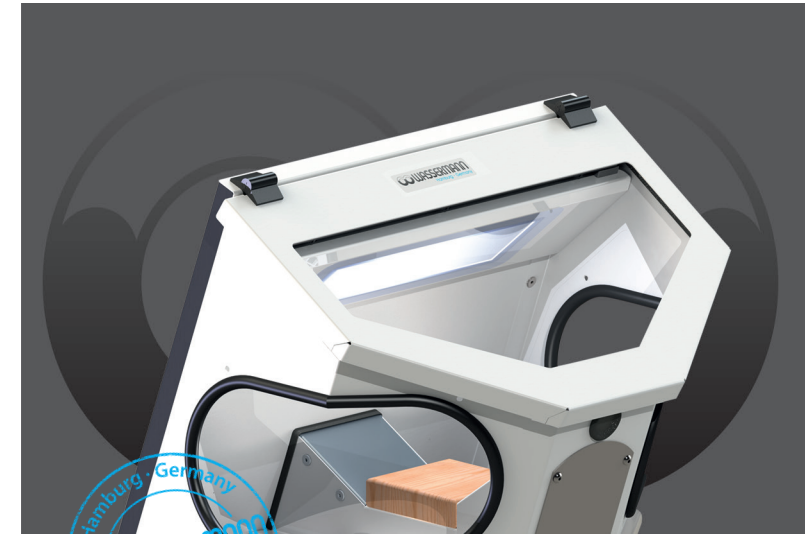
Further information are available on our website at
www.wassermann.hamburg



/WassermannDentalmaschinen

Your Dental Dealer _____

Suction Box Compact III



Suction Box

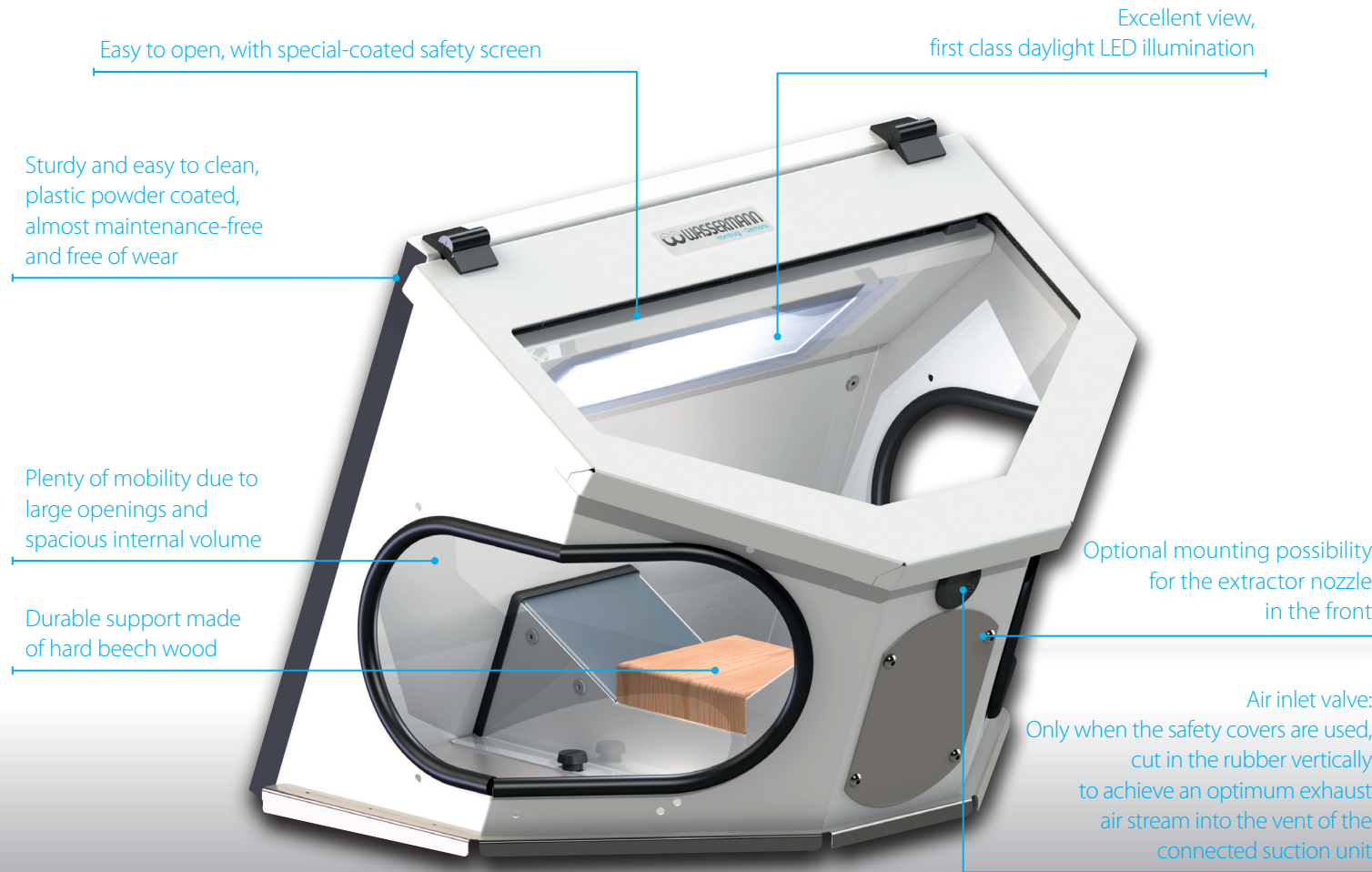


Wassermann Dental-Maschinen GmbH
Rudorffweg 15-17 · 21031 Hamburg · Germany
Phone: +49 (0)40 730 926-20/ -24 · Fax: +49 (0)40 730 37 24
export@wassermann-dental.com · www.wassermann.hamburg
www.facebook.com/WassermannDentalmaschinen

Suction Box

Suction Box Compact III

The **Suction Box Compact III** offers a nearly dust-free operation, and thus meets modern requirements for workplace health and safety. Without the interference of dust, splinters or fumes, it allows the user to work efficiently and relaxed directly on the object. On request the openings for the hands can be additionally sealed with safety covers made of metal. A particular advantage are the two-sided, separate cuts for the handpiece and the sleeves with a lot of moving area and a high standard of hygiene.



Major Features

- Ergonomic shape for optimal physical carriage
- High safety standard: Protection against splinters, dust and fumes
- Tilt and skid resistant
- Quality magnifier, arm rests and safety covers optionally available
- Perfectly matched to the combination with our low-pressure suction units **SG-10**, **SG-1/1** and **SG-1/2 D**
- **Included in delivery:**
Suction Box Compact III with daylight LED illumination and 1 extractor nozzle (optional mounting in the front or in the rear)

Accessories	Item no.
Magnifying glass	143251
Set of arm rests	143303
Set of safety covers	143305
Extractor nozzle Ø 40 mm exterior	143385
Extractor nozzle Ø 50 mm exterior	190286
Various adapters Ø 75 mm (inner) available on request	---

For further accessories (e.g. PVC-hoses) please see flyer "Accessories Suction Technology"

Suction-Box Compact III	Item no. 143390
Voltage	100–240 V / 50/60 Hz
Power consumption	0.1 A
Output	15 W
W x H x D	370 x 310 x 345 mm
Weight	5.5 kg
Extractor nozzle (Optional mounting in the front or in the rear)	Ø 75 mm exterior